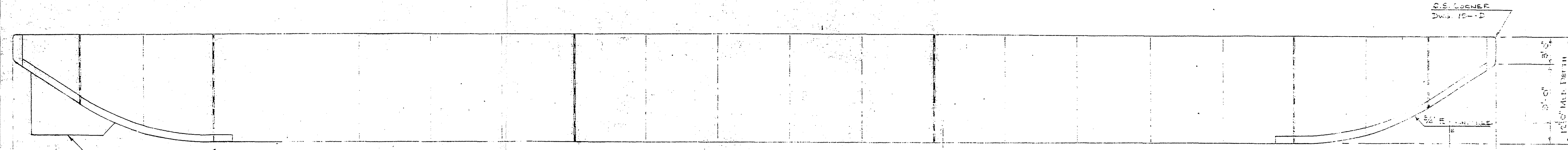
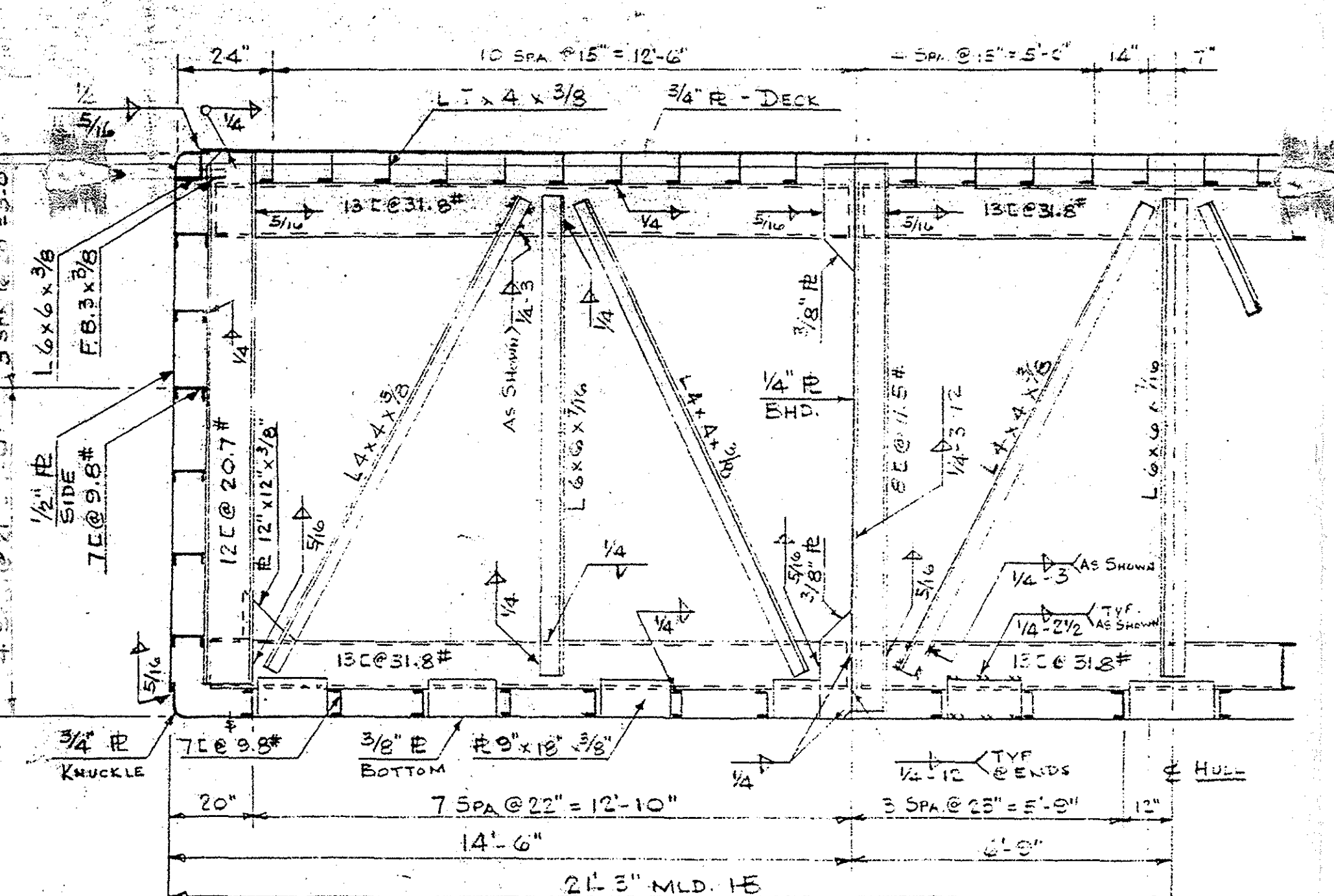
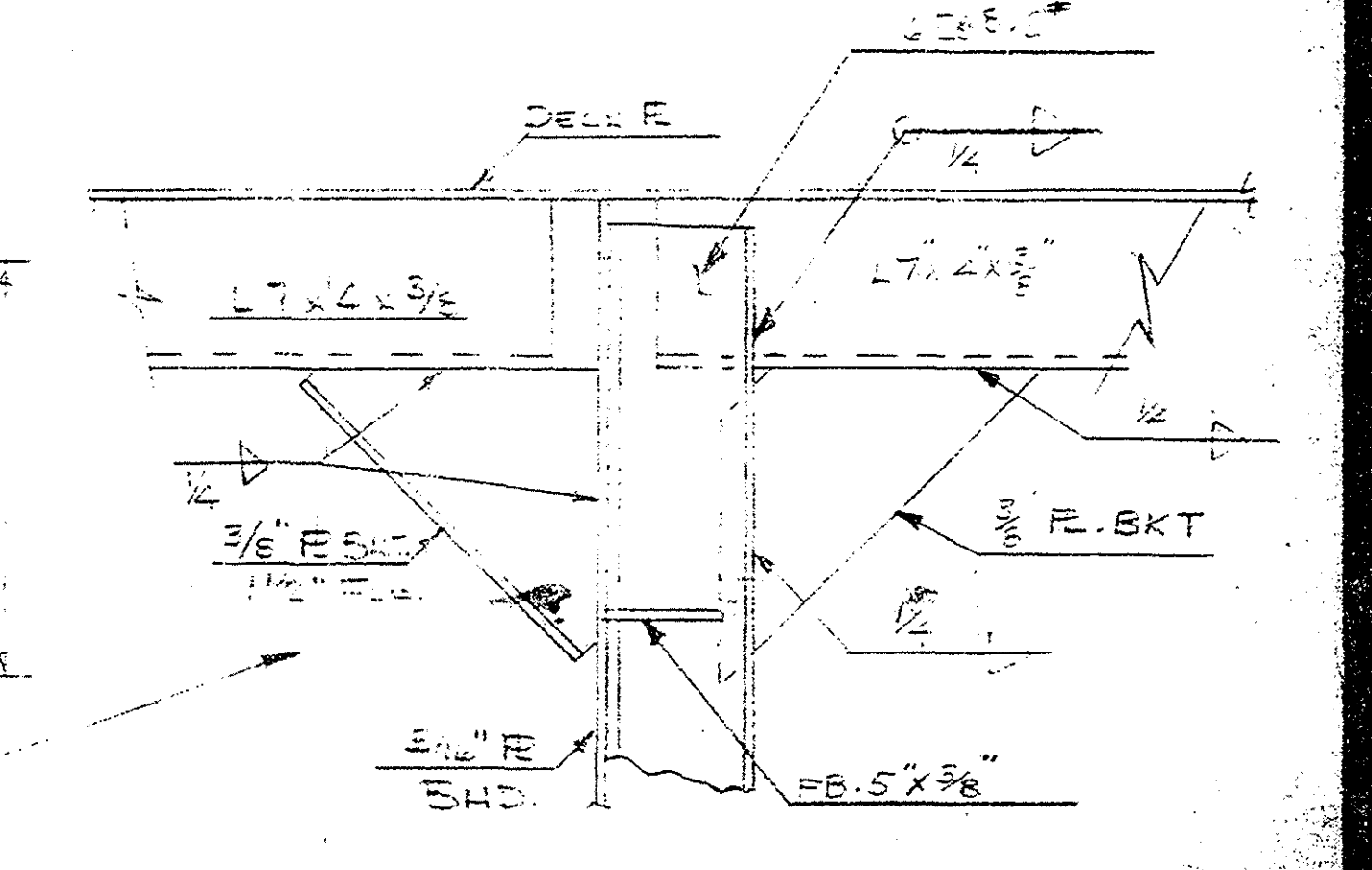


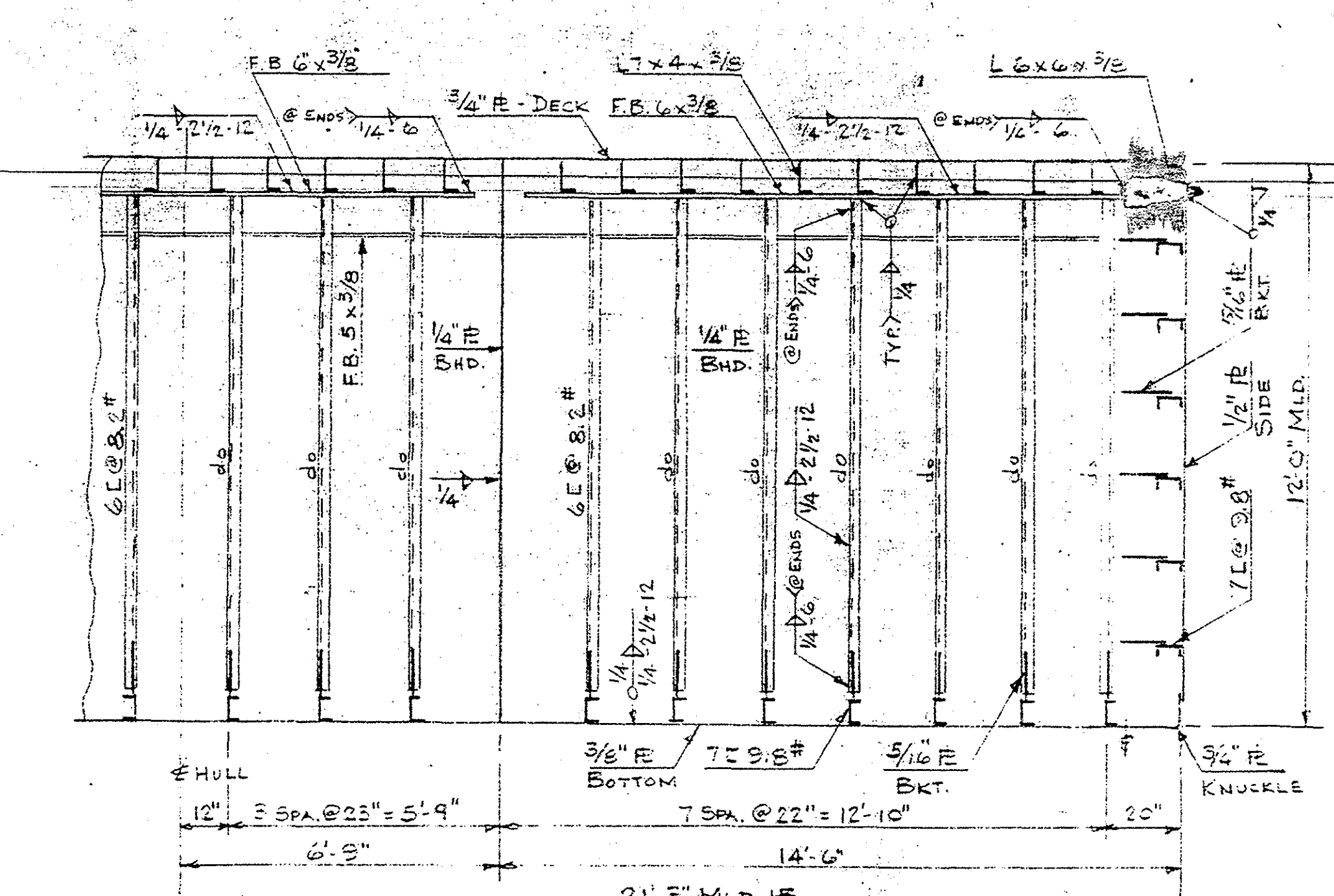
PLAN



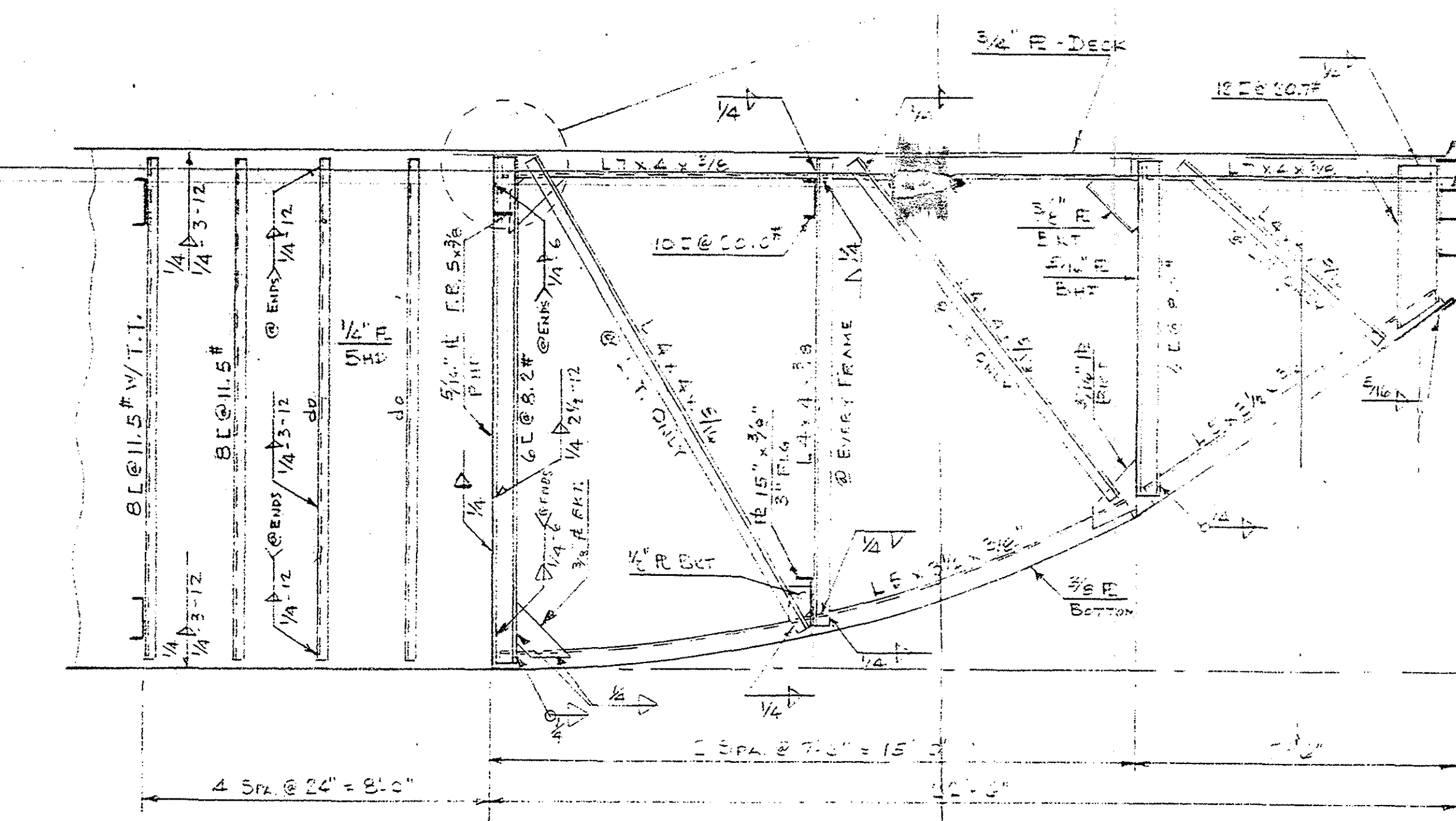
ELEVATION



TRANSV. TRUSS



TRANSV. BHD



RAKE LGL TRUSS

NOTE:

ALL MIDSHIP BOTTOM, DECK & SIDE LONG'S. TO BE WELDED $\frac{1}{4}$ " ∇ 2-11 WITH 6" CONTINUOUS WELD @ ENDS & TRANSV. TRUSSES.

ALL RAKE DECK & SIDE LONG'S. TO BE WELDED $\frac{1}{4}$ " ∇ 3-4 WITH 6" CONTINUOUS WELD @ ENDS & TRANSV. TRUSSES.

ALL AFT. RAKE BOTTOM LONG'S TO BE WELDED $\frac{1}{4}$ " ∇ 3-4 WITH 6" CONTINUOUS WELD @ ENDS & TRANSV. TRUSSES.

ALL FWD. RAKE BOTTOM LONG'S. TO BE WELDED $\frac{1}{4}$ " ∇ .

NOTES:

- INTERIOR PAINT - ONE COAT RED OXIDE.
- EXTERIOR PAINT - NONE.
- WELD BEAD NAME PORT LOADLINES AND DRAFT MARKS.
- THIS BARGE DESIGNED UPON SPECIAL ORDER OF BULTEMA DOCK & DREDGE CO. MUSKOGEE, MICHIGAN FOR COMMERCIAL USE.
- BARGE TO BE BUILT TO UNRESTRICTED SERVICE CLASS # A1 BY A.E.S. LOAD LINE TO BE ASSIGNED FOR UNRESTRICTED SERVICE.
- VESSELS REGISTERED TONNAGE

B-8 8-17-87

DESIGNER	MIN-489	BULTEMA DOCK & DREDGE CO.	6
HULL	W.O.	PURCHASER	UNITS

DISTRIBUTION CODE

1. CUSTOMER	4. ENGINEERING	7. FAB. SHOP	10. PAINTERS
2. S.A.S. S.	5. PLANNING	8. MACH. SHOP	11. REPAIR WARE
3. U.S. C.G.	6. PLANT SHOP	9. YARD ASSEMBLY	12.

PRINT RECORD

DIST. REV. FROM	DATE	POST. REV. FROM	DATE	BY	REV. FROM	DATE
2	7-25-76	1	12-2-76			
7	10-19-76	2	12-2-76			
8	12-2-76	3	12-2-76			
9	12-2-76	4	12-2-76			
10	12-2-76	5	12-2-76			

MAXION MARINE INDUSTRIES, INC.

SCANTLING PLAN FOR 165' x 42'-6" x 12'-0" DECK BARGE

DATE	3/14/88	SCALE	1" = 1'-0"	DRAWING NUMBER	1773-18
BY	R.F.	DATE	1-13-76		
CHKD BY	EMH	DATE	1-14-76		

GLD & D 1530 007